

NEWBORN

CLIENT CLOSET



OUTFITS

The below outfits are available for your newborn session. As you can see, I prefer soft neutral earthy tones for newborn sessions. Why?

- This helps ensure the light and airy style that I pursue in my newborn images.
- This helps avoid colour casting which occurs when an item of clothing is very colourful and light reflects off of it and casts the hue on to the newborn's skin.
- These tones ensure not to draw the eye too much away from the whole point of the photo: the newborn!

WHITE SLEEP SET - M



1.

BEIGE OVERALLS - M



2.

PINK TEXTURED ONESIE - M



3.

WHITE LACE - S & M



4.

BLUE ONESIES - M



5.

WHITE & CREAM TULLE



6.

BEIGE ONESIES - M



7.

WHITE MOHAIR BEAR - M/L



8.

GREEN TEXTURED ONESIE - M



9.

WHITE PANTS & CAP - S/M



10.

PINK ONESIE - L



11.

CAMEL ONESIE - L



12.

GREEN ONESIE - L



13.

WHITE ONESIE - L



14.

RUST ONESIE - L



15.

PINK ONESIE - L



16.

WHITE OVERALLS - M



17.

WHITE & CREAM TULLE



18.

MUSTARD ONESIE - M



19.

GREEN ONESIE - L



20.

TAN OVERALLS - M



21.

BROWN MOHAIR BEAR - M/L



22.

MUSTARD ONESIE - L



23.

ACCESSORIES

The below accessories are also available for your newborn shoot.

AN ARRAY OF PILLOWS



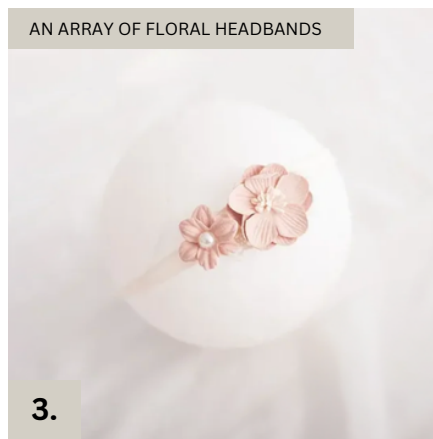
1.

AN ARRAY OF BOW HEADBANDS



2.

AN ARRAY OF FLORAL HEADBANDS



3.

WHITE ANGEL WINGS



4.

WHITE KNITTED HEART



5.

AN ARRAY OF BONNETS



6.

AN ARRAY OF SLEEP CAPS



7.

WHITE WRAP



8.